

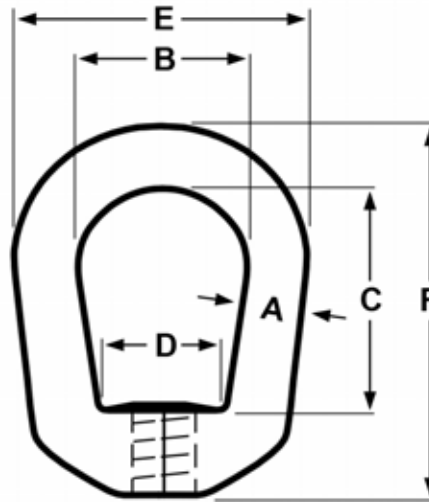


DROP FORGED EYE NUTS

CAUTION: NEVER EXCEED THE WORKING LOAD LIMIT.

Read important warnings and information in T.O.C. > GENERAL WARNINGS and EYE NUTS ⚠️

SELF COLORED, GALVANIZED and STAINLESS STEEL, TYPE 316



| Size No. | Thread Size | Working Load Limit in Pounds | Bail A | Weight in Pounds | B | C | D | E | F |
|----------|----------------|------------------------------|--------|------------------|------|------|------|------|-------|
| #1 | 1/4" - 20 | 520 | 1/4" | .09 | .75 | 1.00 | .66 | 1.25 | 1.69 |
| #1A | 5/16" - 18 | 850 | 1/4" | .09 | .75 | 1.00 | .66 | 1.25 | 1.69 |
| #2A * | 1/4" - 20 | 520 | 5/16" | .15 | 1.00 | 1.19 | .75 | 1.63 | 2.06 |
| #2B * | 5/16" - 18 | 520 | 5/16" | .15 | 1.00 | 1.19 | .75 | 1.63 | 2.06 |
| #2 * | 3/8" - 16 | 1,250 | 5/16" | .15 | 1.00 | 1.19 | .75 | 1.63 | 2.06 |
| #3A * | 1/2" - 13 | 2,250 | 3/8" | .27 | 1.25 | 1.44 | 1.00 | 2.06 | 2.50 |
| #4B * | 3/8" - 16 | 1,250 | 1/2" | .57 | 1.50 | 1.88 | 1.25 | 2.50 | 3.13 |
| #4C * | 1/2" - 13 | 2,250 | 1/2" | .57 | 1.50 | 1.88 | 1.25 | 2.50 | 3.13 |
| #4 * | 5/8" - 11 | 3,600 | 1/2" | .57 | 1.50 | 1.88 | 1.25 | 2.50 | 3.13 |
| #4A * | 3/4" - 10 | **5,200 | 1/2" | .57 | 1.50 | 1.88 | 1.25 | 2.50 | 3.13 |
| #5 | 3/4" - 10 | 5,200 | 5/8" | .97 | 1.75 | 2.31 | 1.38 | 3.00 | 3.95 |
| #6 | 7/8" - 9 | 7,200 | 3/4" | 1.69 | 2.00 | 2.50 | 1.63 | 3.50 | 4.40 |
| #6A | 1" - 8 | 7,200 | 3/4" | 1.69 | 2.00 | 2.50 | 1.63 | 3.50 | 4.44 |
| #8A | 1.1/8" - 7 | 12,300 | 1" | 3.85 | 2.50 | 3.37 | 1.88 | 4.40 | 5.62 |
| #8 | 1.1/4" - 7 | 15,500 | 1" | 3.85 | 2.50 | 3.44 | 1.88 | 4.40 | 5.62 |
| #8B | 1.3/8" - 6 | 15,500 | 1" | 3.85 | 2.50 | 3.44 | 1.88 | 4.40 | 5.62 |
| #8C | 1.1/2" - 6 | 15,500 | 1" | 3.85 | 2.50 | 3.44 | 1.88 | 4.40 | 5.62 |
| #10 | 1.1/2" - 6 | 22,500 | 1.1/4" | 6.31 | 3.08 | 3.88 | 2.38 | 5.60 | 6.63 |
| #11A | 1.3/4" - 5 | 30,500 | 1.1/2" | 18.70 | 4.00 | 6.25 | 3.88 | 7.00 | 10.00 |
| #11 | 2" - 4.1/2 | 40,000 | 1.1/2" | 18.70 | 4.00 | 6.25 | 3.88 | 7.00 | 10.00 |
| #11B | 2.1/4" - 4.1/2 | 40,000 | 1.1/2" | 18.70 | 4.00 | 6.25 | 3.88 | 7.00 | 10.00 |
| #11C | 2.1/2" - 4 | 40,000 | 1.1/2" | 18.70 | 4.00 | 6.25 | 3.88 | 7.00 | 10.00 |

**** CAUTION: Due to the nature of stainless steel, deformation may occur at proof loads exceeding 7000 pounds.**

* #2A thru #4A available in 316 stainless steel.