

PIPE LIFTING SLINGS

TEA CUP PIPE CARRIER

An efficient way to handle concrete water and sewer pipes. The Caldwell Tea Cup Pipe Carrier will save you time and money. With three sizes available these "tea cups" will handle from 3/4" to 1-1/2" cable, and lifts up to 15 tons.

CODE NO.	USE WITH CABLE	RATED CAPACITY (TONS)	A	B	C	D	E	F	G
PC-3/4	3/4"	4.9	5-9/16	2	2-1/8	1-1/8	4-11/16	1-7/8	1-1/8
PC-3/4	7/8"	6.6	5-9/16	2	2-1/8	1-1/8	4-11/16	1-7/8	1-1/8
PC-1	1"	8.5	6	2-1/2	2-5/8	1-3/8	5-5/8	2	1-3/8
PC-1	1-1/8"	10	6	2-1/2	2-5/8	1-3/8	5-5/8	2	1-3/8
PC-1	1-1/4"	13	6	2-1/2	2-5/8	1-3/8	5-5/8	2	1-3/8
PC-1 1/2	1-1/2"	18	6	3	3-1/4	1-5/8	7-5/8	3	1-5/8

TEA CUP SLINGS TYPE LS

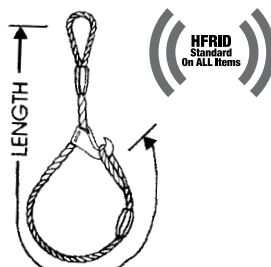
CODE NO.	WIRE ROPE DIAMETER	LENGTH, L	A	B
LS-3/4	3/4"	5'0" STD	3.25	1.55
LS-7/8	7/8"	5'0" STD	3.86	1.80
LS-1	1"	5'0" STD	4.36	2.05
LS-1-1/8	1-1/8"	5'0" STD	4.81	2.30
LS-1-1/4	1-1/4"	5'0" STD	5.42	2.56
LS-1-1/2	1-1/2"	5'0" STD	6.52	3.00

PIPE CHOKERS TYPES TH AND LH

CODE NO.	CODE NO.	WIRE DIAMETER	CHOKER RWL TONS
TH380	-	3/8"	.92
TH120	LH120	1/2"	1.6
TH916	LH916	9/16"	2.0
TH580	LH580	5/8"	2.5
TH340	LH340	3/4"	3.6
TH780	LH780	7/8"	4.8
TH100	LH100	1"	6.3
TH118	-	1-1/8"	7.9
TH114	-	1-1/4"	9.7
TH138	-	1-3/8"	12
TH120	-	1-1/2"	14

TYPE TH

Loop, lifting end; Travelling Choker Hook, Body; Loop, load end.

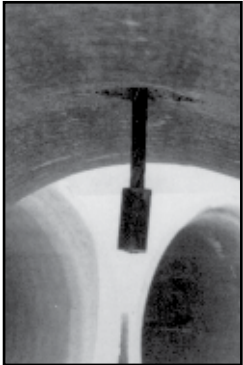
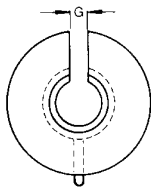
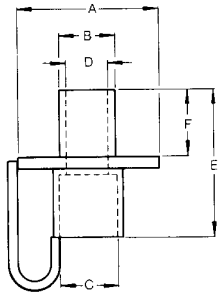


TYPE LH

Loop, lifting end; Ferrule Choker Hook body; Ferrule, load end.



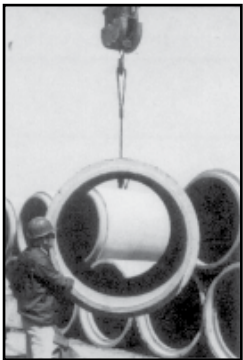
TYPE LS



1. Drop pipe carrier lifting sling through hole in pipe.



2. Align and insert "tea cup" pipe carrier into lifting sling.



3. Lift pipe.

**SEE PAGE 43
WELD-ON HOOKS
FOR BUCKETS**

Inspect before use. Follow OSHA, ANSI B30.9 or Manufacturers Guidelines. Use by untrained persons is hazardous. Improper use will result in serious injury or death. Do not exceed rated capacity. This product will fail if damaged, abused, misused, overused or improperly maintained.

WARNING