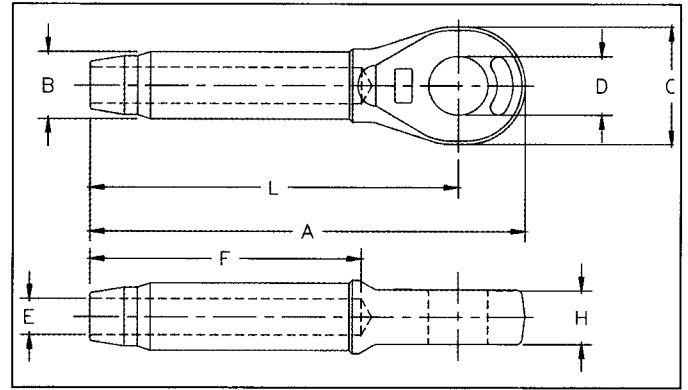
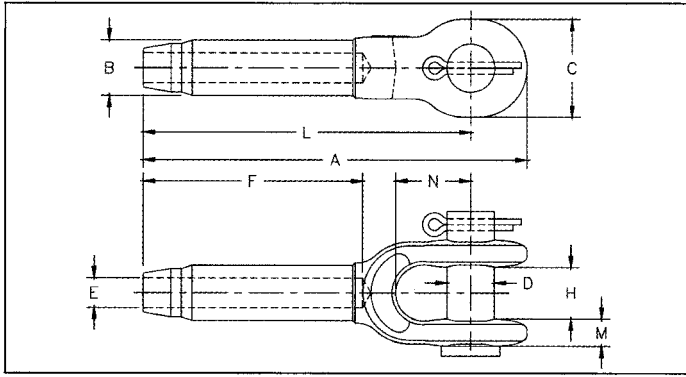


SWAGED SOCKET ASSEMBLIES

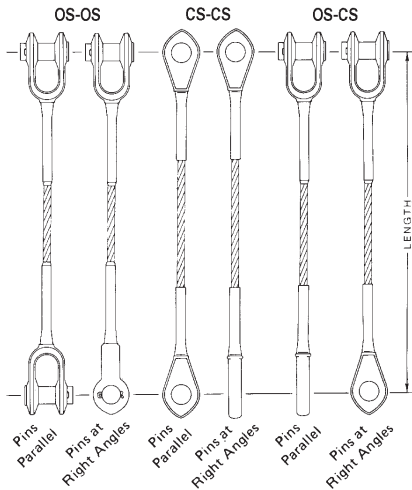


S-501 Open Socket Specifications													
Stock No.	Rope Size (in.)	Weight Each (lbs.)	Before Swage Dimensions										Max. After Swage Dim. (in.)
			A	B	C	D	E	F	H	L	M	N	
1039021	1/4	.52	4.81	.50	1.38	.69	.27	2.13	.69	4.00	.38	1.50	.46
1039049	5/16	1.12	6.25	.77	1.62	.81	.34	3.19	.81	5.31	.47	1.75	.71
1039067	3/8	1.30	6.25	.77	1.62	.81	.41	3.19	.81	5.31	.47	1.75	.71
1039085	7/16	2.08	7.81	.98	2.00	1.00	.48	4.25	1.00	6.69	.56	2.00	.91
1039101	1/2	2.08	7.81	.98	2.00	1.00	.55	4.25	1.00	6.69	.56	2.00	.91
1039129	9/16	4.67	9.50	1.25	2.38	1.19	.61	5.31	1.25	8.13	.68	2.25	1.16
1039147	5/8	4.51	9.50	1.25	2.38	1.19	.67	5.31	1.25	8.13	.68	2.25	1.16
1039165	3/4	7.97	11.56	1.55	2.75	1.38	.80	6.38	1.50	10.00	.78	2.75	1.42
1039183	7/8	11.52	13.41	1.70	3.13	1.62	.94	7.44	1.75	11.63	.94	3.25	1.55
1039209	1	17.80	15.47	1.98	3.69	2.00	1.06	8.50	2.00	13.38	1.06	3.75	1.80
1039227	1 1/8	25.25	17.31	2.25	4.06	2.25	1.19	9.56	2.25	15.00	1.19	4.25	2.05
1039245	1 1/4	35.56	19.06	2.53	4.50	2.50	1.33	10.63	2.50	16.50	1.22	4.75	2.30
1039263	1 3/8	43.75	20.94	2.80	5.00	2.50	1.45	11.69	2.50	18.13	1.38	5.25	2.56
1039281	1 1/2	58.50	22.88	3.08	5.50	2.75	1.58	12.75	3.00	19.75	1.69	5.75	2.81
1039307	1 3/4	88.75	26.63	3.39	6.69	3.50	1.86	14.88	3.50	23.00	2.11	6.75	3.06
1042767	2	146.25	31.44	3.94	8.00	3.75	2.11	17.00	4.00	26.88	2.37	8.00	3.56

* Maximum Proof Load shall not exceed 40% of XXIP rope catalog breaking strength.

S-502 Closed Socket Specifications													
Stock No.	Rope Size (in.)	Weight Each (lbs.)	Before Swage Dimensions										Max. After Swage Dim. (in.)
			A	B	C	D	E	F	H	L	M	N	
1039325	1/4	.33	4.31	.50	1.38	.75	.27	2.12	.67	4.50	.38	1.50	.46
1039343	5/16	.75	5.44	.77	1.62	.88	.34	3.19	.67	4.50	.47	1.75	.71
1039361	3/8	.72	5.44	.77	1.62	.88	.41	3.19	.67	4.50	.47	1.75	.71
1039389	7/16	1.42	6.91	.98	2.00	1.06	.48	4.25	.86	5.75	.56	2.00	.91
1039405	1/2	1.42	6.91	.98	2.00	1.06	.55	4.25	.86	5.75	.56	2.00	.91
1039423	9/16	2.92	8.66	1.25	2.38	1.25	.61	5.31	1.13	7.25	.68	2.25	1.16
1039441	5/8	2.85	8.66	1.25	2.38	1.25	.67	5.31	1.13	7.25	.68	2.25	1.16
1039469	3/4	5.00	10.28	1.55	2.88	1.44	.80	6.38	1.31	8.63	.78	2.75	1.42
1039487	7/8	6.80	11.94	1.70	3.12	1.69	.94	7.44	1.50	10.13	.94	3.25	1.55
1039502	1	10.40	13.56	1.98	3.63	2.06	1.06	8.50	1.75	11.50	1.06	3.75	1.80
1039520	1 1/8	14.82	15.03	2.25	4.00	2.31	1.19	9.56	2.00	12.75	1.19	4.25	2.05
1039548	1 1/4	21.57	16.94	2.53	4.50	2.56	1.33	10.63	2.25	14.38	1.22	4.75	2.30
1039566	1 3/8	28.54	18.63	2.80	5.00	2.56	1.45	11.69	2.25	15.75	1.38	5.25	2.56
1039584	1 1/2	38.06	20.12	3.08	5.50	2.81	1.58	12.75	2.50	17.00	1.69	5.75	2.81
1039600	1 3/4	51.00	23.56	3.39	6.25	3.56	1.86	14.88	3.00	20.00	2.11	6.75	3.06
1042589	2	89.25	27.62	3.94	7.25	3.81	2.11	17.00	3.25	23.00	2.37	8.00	3.56

* Maximum Proof Load shall not exceed 40% of XXIP rope catalog breaking strength.



SWAGED SOCKET ASSEMBLIES

CODE NO.	CODE NO.	CODE NO.	ROPE DIA.	RATED CAPACITY TONS (XIP)	PIN DIA.	HOLE DIA.
OSOS140	CSCS140	OCS140	1/4"	.69	.688	.75
OSOS516	CSCS516	OCS516	5/16"	1.05	.812	.875
OSOS380	CSCS380	OCS380	3/8"	1.50	.812	.875
OSOS716	CSCS716	OCS716	7/16"	2.04	1.00	1.063
OSOS120	CSCS120	OCS120	1/2"	2.66	1.00	1.063
OSOS916	CSCS916	OCS916	9/16"	3.36	1.19	1.25
OSOS580	CSCS580	OCS580	5/8"	4.12	1.19	1.25
OSOS340	CSCS340	OCS340	3/4"	5.88	1.38	1.438
OSOS780	CSCS780	OCS780	7/8"	7.96	1.63	1.688
OSOS100	CSCS100	OCS100	1"	10.34	2.00	2.063
OSOS118	CSCS118	OCS118	1-1/8"	13.00	2.25	2.313
OSOS114	CSCS114	OCS114	1-1/4"	15.98	2.50	2.563
OSOS138	CSCS138	OCS138	1-3/8"	19.20	2.50	2.563
OSOS112	CSCS112	OCS112	1-1/2"	22.80	2.75	2.813
OSOS134	CSCS134	OCS134	1-3/4"	30.60	3.50	3.563
OSOS200	CSCS200	OCS200	2"	39.60	3.75	3.813
OSOS214	CSCS214	OCS214	2-1/4"	49.40	4.25	4.312
OSOS212	CSCS212	OCS212	2-1/2"	60.40	4.25	4.312